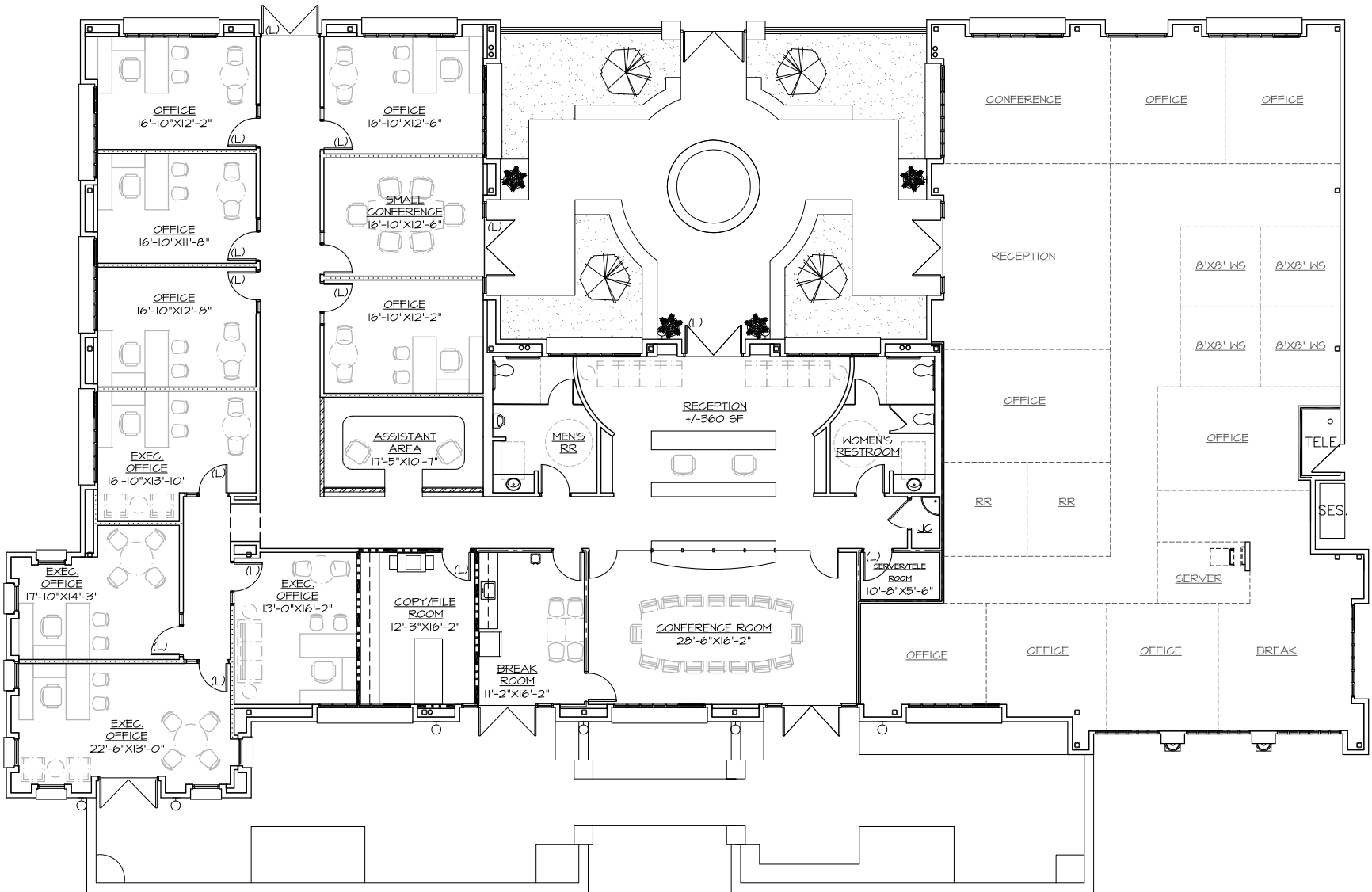


ARMA FINANCIAL
± 5,094 USF

AVAILABLE
± 3,213 USF



SPACE PLAN
NOT FOR
CONSTRUCTION

OWNERSHIP AND USE OF DOCUMENTS
The set of construction documents are instruments of service of Krause Interiors, Inc. for use solely with respect to the project. No reproduction or reuse of the documents is permitted without the written consent of Krause Interiors, Inc. Any reliance or modification to the set of construction documents are to be performed solely by Krause Interiors, Inc.

ARMA FINANCIAL
BUILDING A AT CANYON VILLAGE
18899 N. THOMPSON PEAK PARKWAY
SCOTTSDALE, ARIZONA

SUITE 100

REVISIONS

DRAWN BY
JC
CHECKED BY
CS
DATE
10/06/09
SCALE
1"=0' = 3/32"
JOB NUMBER
2601205
SHEET NAME
SPACE PLAN

2141 E. Camelback Road Suite 200 • Phoenix, Arizona 85016 • (1) 602.867.2200 • (F) 602.867.2266 • www.krauseinteriors.com