



# NORTH 101 BUSINESS PARK

2002 North 19th Avenue | Phoenix, Arizona

## PROPERTY HIGHLIGHTS

- Fully furnished and secured call center campus
- Property is visible from the freeway and provides great freeway access
- Three-building project ideal for single-user corporate campus
- Experienced and stable ownership
- Former American Express facility
- Heavy power and infrastructure; ideal for operation center
- 1,000 kw, 2,500-gallon Caterpillar back-up generator in place
- ±4,000 square feet of raised floor data center

# FOR LEASE

FOR FURTHER INFORMATION CONTACT:

**BRAD ANDERSON**  
Executive Vice President  
602.735.1713  
brad.anderson@cbre.com

**BRYAN TAUTE**  
Senior Vice President  
602.735.1710  
bryan.taute@cbre.com

**MIKE STRITTMATTER**  
Sales Assistant  
602.735.5512  
mike.strittmatter@cbre.com

2415 East Camelback Road | Phoenix, Arizona 85016  
T 602.735.5555 | F 602.735.5655 | [www.cbre.com/phoenix](http://www.cbre.com/phoenix)

**CBRE**  
CB RICHARD ELLIS

# NORTH 101 BUSINESS PARK

20002 North 19th Avenue | Phoenix, Arizona



For Further Information Contact:

**BRAD ANDERSON**  
Executive Vice President  
602.735.1713  
brad.anderson@cbre.com

**BRYAN TAUTE**  
Senior Vice President  
602.735.1710  
bryan.taute@cbre.com

**MIKE STRITTMATTER**  
Sales Assistant  
602.735.5512  
mike.strittmatter@cbre.com

**CBRE**  
CB RICHARD ELLIS

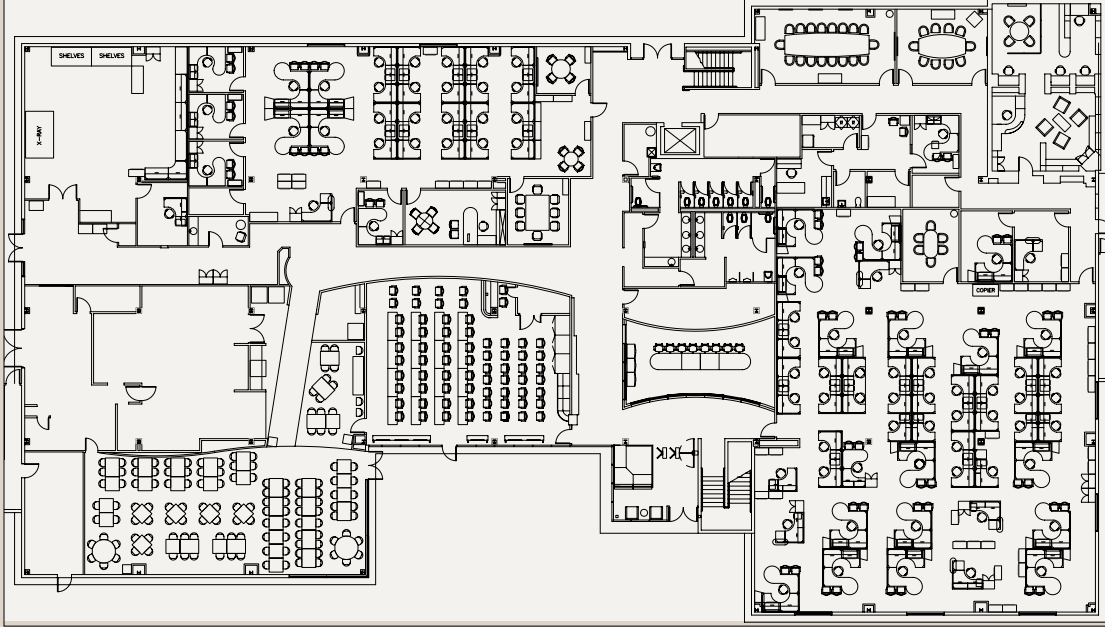
2415 East Camelback Road | Phoenix, Arizona 85016  
T 602.735.5555 | F 602.735.5655  
www.cbre.com/phoenix

# NORTH 101 BUSINESS PARK

20002 North 19th Avenue | Phoenix, Arizona

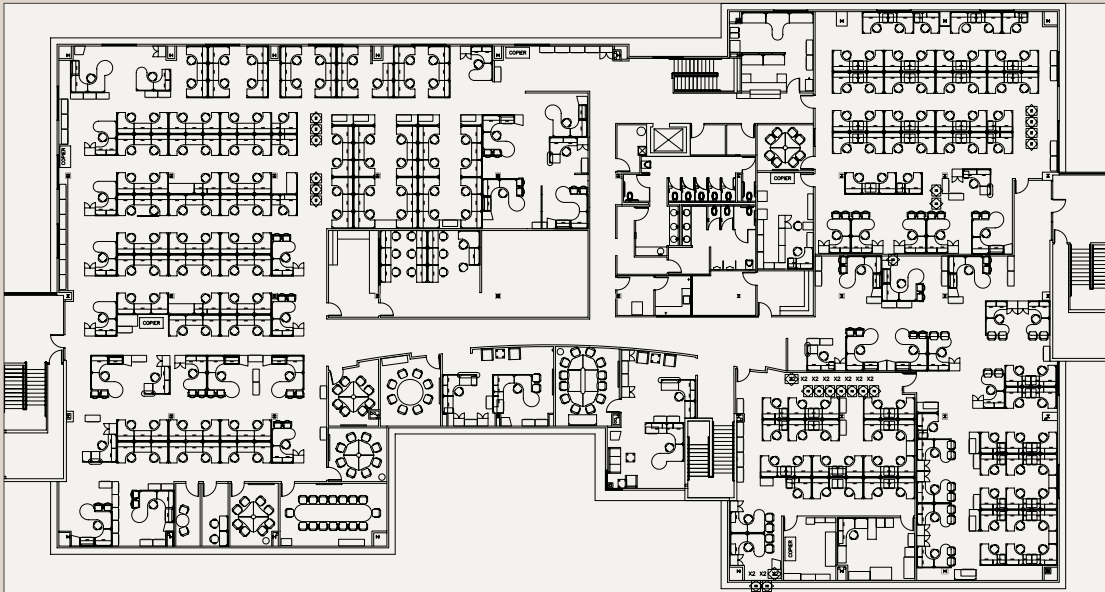
Building A - ±51,939 SF

First Floor



Second Floor

  
Floor Plans Not to Scale

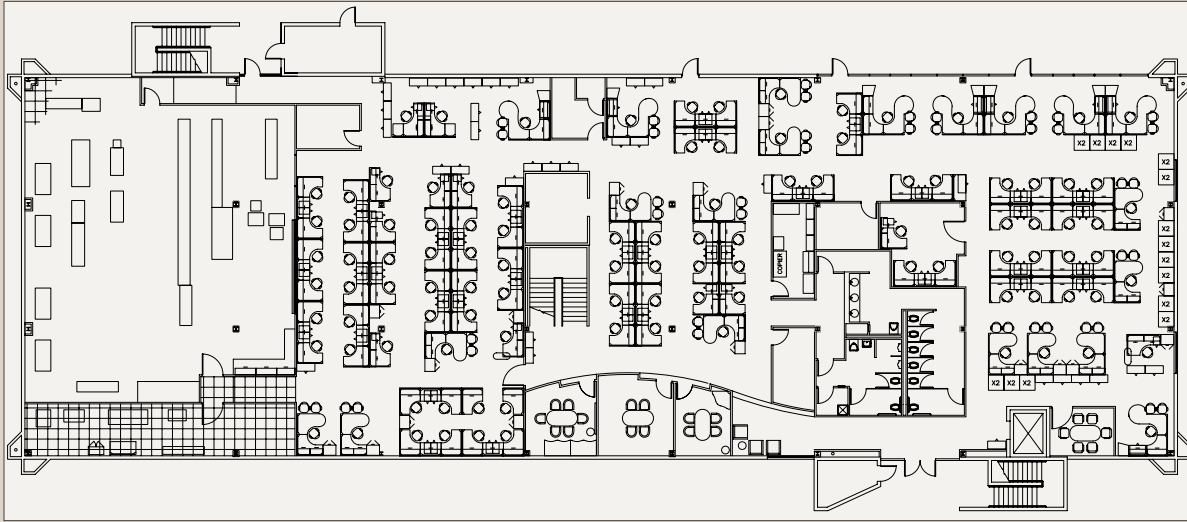


# NORTH 101 BUSINESS PARK

20002 North 19th Avenue | Phoenix, Arizona

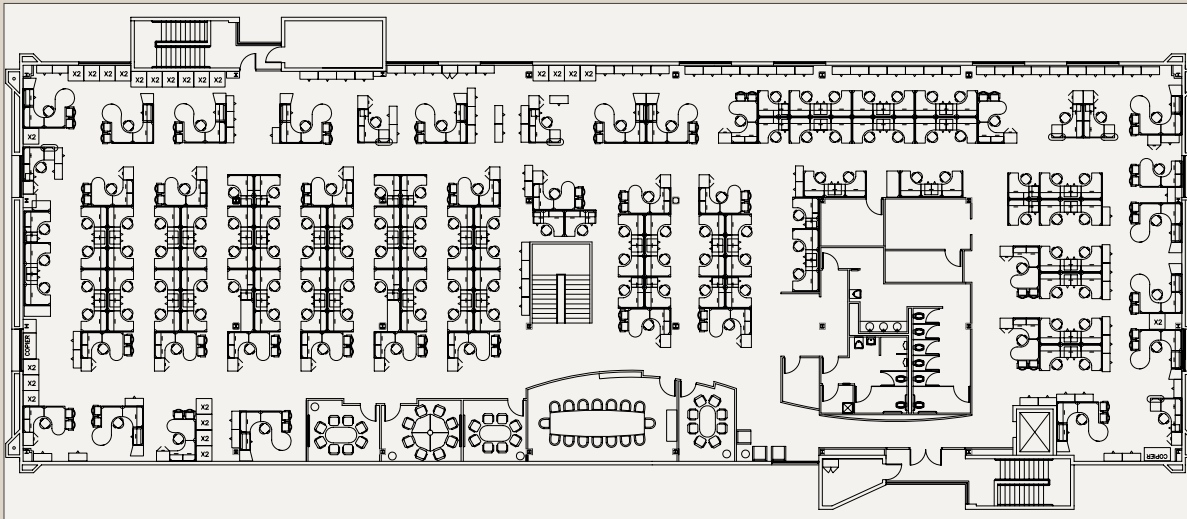
Building B - ±33,681 SF

First Floor



Floor Plans Not to Scale

Second Floor

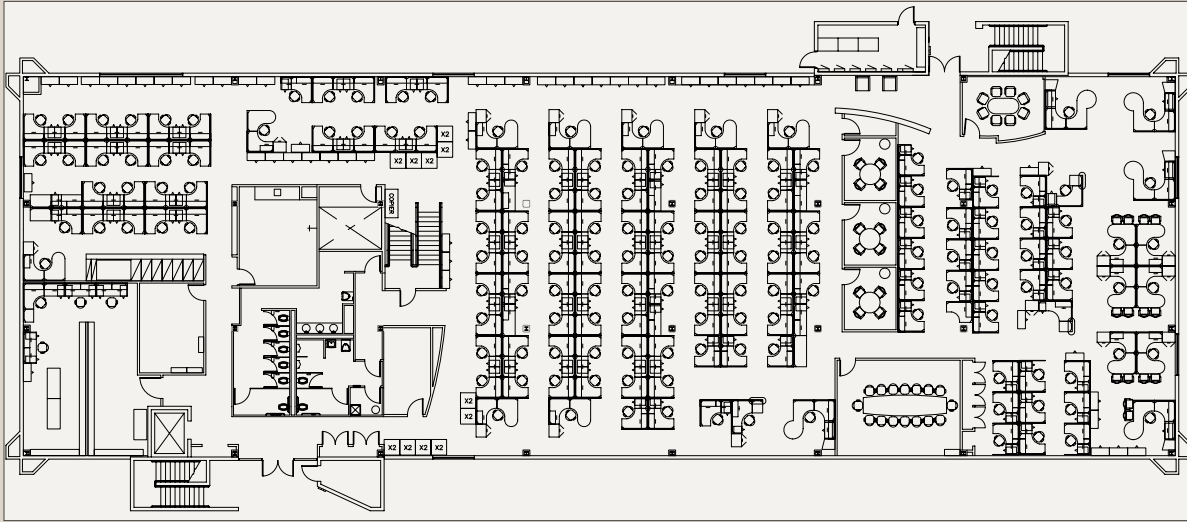


# NORTH 101 BUSINESS PARK

20002 North 19th Avenue | Phoenix, Arizona

Building C - ±33,681 SF

First Floor



Floor Plans Not to Scale

Second Floor

